

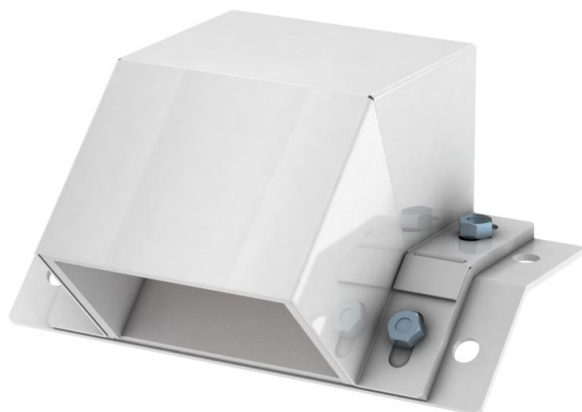
Technical data sheet

45° vertical bend, falling

Item number: 7216611



Falling vertical bend for the creation of vertical jumps for suspended mounting of the BSKM 0711, with the acceptance option for M10 threaded rods, including seals and nuts as well as screws for equipotential bonding.



St Steel

L Painted

Master data

Item number	7216611
Type	BSKM-EF 0711RW
Description 1	Level, falling
Description 2	for suspended mounting
Manufacturer	OBO
Dimension	70x110
Colour	Pure white; RAL 9010
Material	Steel
Surface	Painted
Surface standard	
Smallest sales unit	1
Unit of quantity	Piece
Weight	139.4 kg
Weight unit	kg/100 pc.

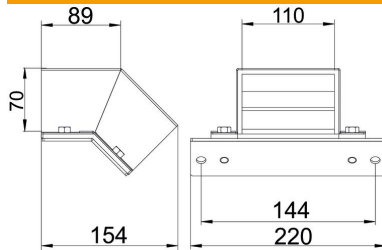
Technical data sheet

45° vertical bend, falling

Item number: 7216611



Dimensions



Width	220 mm
Height	121 mm
Dimension A	220 mm
Dimension B	110 mm
Dimension b	110 mm
Dimension d	144 mm
Dimension d min.	154 mm
Dimension E	89 mm
Dimension h	70 mm
Dimension H	70 mm

Technical data

Number of flammable sides	3
Cover fastening	Miscellaneous
Fire resistance class I - installation duct	120
With perforation	no
Partitions possible	no
Jacketing	Steel
Material of the insulation	Miscellaneous
Angle of the bend	45 °