

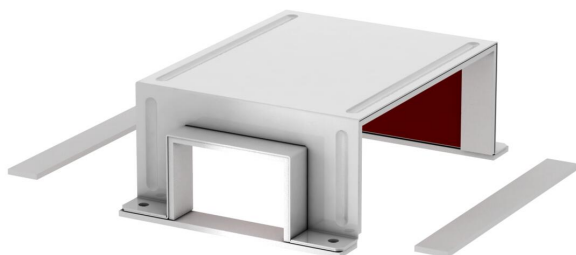
Technical data sheet

T reducing branch piece

Item number: 7216647



Hood for the covering of three duct ends running towards each other in a T shape. Straight stretch, twice BSKM 1025, branch reduced to BSKM 0711. Including glued-in seals for closing the joints and loose seals when combining with lock plate; screws for equipotential bonding also included.



St Steel

L Painted

Master data

Item number	7216647
Type	BSKM-TR 1025RW
Description 1	T reducing branch
Description 2	for wall and ceiling mounting
Manufacturer	OBO
Dimension	100x250
Colour	Pure white; RAL 9010
Material	Steel
Surface	Painted
Surface standard	
Smallest sales unit	1
Unit of quantity	Piece
Weight	153.2 kg
Weight unit	kg/100 pc.

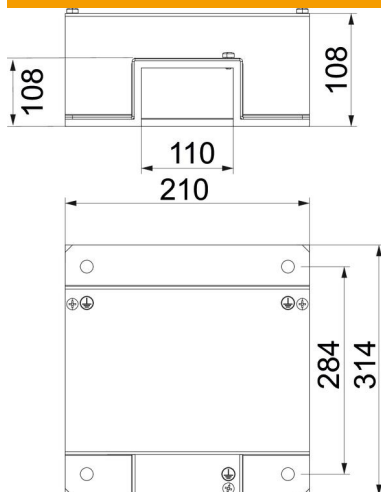
Technical data sheet

T reducing branch piece

Item number: 7216647



Dimensions



Width	314 mm
Height	108 mm
Dimension A	314 mm
Dimension B	110 mm
Dimension b	250 mm
Dimension d	284 mm
Dimension d min.	210 mm
Dimension h	100 mm
Dimension H	108 mm
Dimension t	108 mm

Technical data

Number of flammable sides	3
Fire resistance class I – installation duct	120
With perforation	no
Partitions possible	no
Jacketing	Steel
Material of the insulation	Miscellaneous