

Technical data sheet

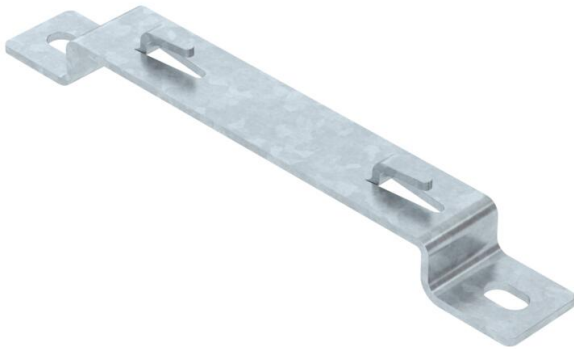
Stand-off bracket FT

Item number: 6015660



Stand-off bracket for stand-off of mesh cable trays on the floor or on the wall.

GRM mesh cable tray types with side heights of 35, 55 and 105 mm can be mounted onto the spacer clamp. Screwless fastening of the mesh cable tray on the stand-off bracket.



St Steel

FT Hot-dip galvanised

Master data

| | |
|---------------------|---------------------|
| Item number | 6015660 |
| Type | DBLG 20 150 FT |
| Description 1 | Stand-off bracket |
| Description 2 | for mesh cable tray |
| Manufacturer | OBO |
| Dimension | B150mm |
| Material | Steel |
| Surface | Hot-dip galvanised |
| Surface standard | DIN EN ISO 1461 |
| Smallest sales unit | 20 |
| Unit of quantity | Piece |
| Weight | 18.1 kg |
| Weight unit | kg/100 pc. |

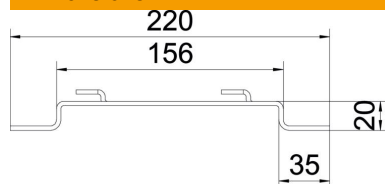
Technical data sheet

Stand-off bracket FT

Item number: 6015660



Dimensions



| | |
|-------------|---------|
| Height | 20 mm |
| Height | 0.79 in |
| Dimension A | 30 mm |
| Dimension B | 156 mm |
| Dimension L | 220 mm |



Technical data

| | |
|------------------------------|---|
| Version for | Wall/ceiling clamp, trapezoidal profile |
| Suitable for mesh cable tray | yes |
| Suitable for cable ladder | no |
| Suitable for cable tray | no |
| Tray fastening | Retaining lug |