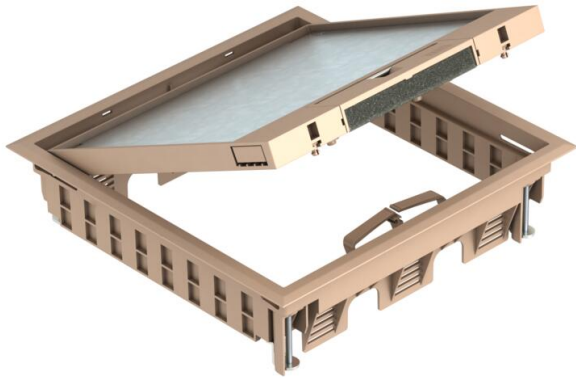


# Technical data sheet

## GES9-3B service outlet with handle clamp

Item number: 7405081



Service outlet with handle clamp for up to 12 individual Modul 45 devices in 3 UT4 universal supports, use in trunking systems and system floors for indoor use.

Floor covering recess in the hinged cover pre-adjusted to 5 mm, if necessary adjustable to 10 mm.

Up to 9 installation devices with 50 mm central plate can be inserted.

Service outlet with handle clamp, 3-compartment, for the installation of MT9 mounting support. Three type APMT5 cover plates can be installed. Floor covering recess in the hinged cover pre-adjusted to 5 mm, if necessary adjustable to 10 mm.



PA Polyamide

### Master data

Item number	7405081
Type	GES9-3B U 1019
Description 1	Service outlet
Description 2	for universal mounting
Manufacturer	OBO
Dimension	264x264x67
Colour	Grey-beige; RAL 1019
Material	Polyamide
Smallest sales unit	1
Unit of quantity	Piece
Weight	205 kg
Weight unit	kg/100 pc.

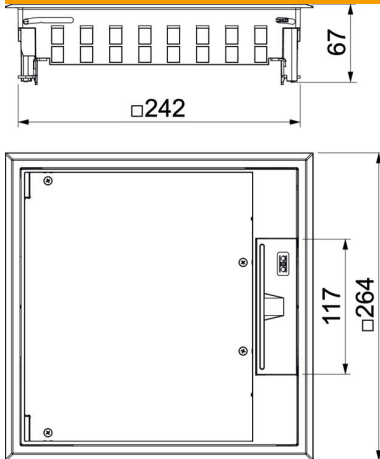
# Technical data sheet

## GES9-3B service outlet with handle clamp

Item number: 7405081



### Dimensions



Length	264 mm
Width	264 mm
Height	67 mm

### Technical data

Number of installable devices	12
Number of mounting boxes	3
Version for	Square
Cable outlet version	Swivellable cord outlet
Floor covering protection frame	yes
Floor care	Dry
Seal installation option	no
Floor height, min.	73 mm
Suitable for raised floor installation	yes
Suitable for screed-flush closed underfloor ducts	no
Suitable for screed-covered underfloor ducts	yes
Suitable for cavity floor installation	yes
Suitable for wet care	no
Suitable for underfloor box	250/350
Suitable for underfloor ducts	yes
Device support to accept mounting boxes	yes
Length of external dimensions	264 mm
Length of installation dimensions	244 mm
With floor covering recess	yes
Nominal size for device installation units	9
Frame version	Carpet protection frame
Protection rating (IP) when used	IP20
Protection rating (IP) when unused	IP40
Protection rating IK code	IK08
Heavy-duty version	no
Installation system type	UT4
Vertical load, large area	to 5,000 N
Vertical load, small area	to 3,000 N

# Technical data sheet

GES9-3B service outlet with handle clamp

Item number: 7405081



## Technical data

Approvals	VDE
Opening mechanism	Handle
Floor covering thickness	5 mm