

# Technical data sheet

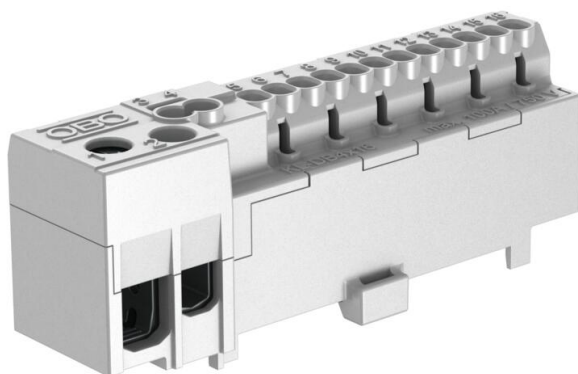
## Phase terminal, with screwless contacts, 12 terminals

Item number: 2016270



Phase connection terminal with 12 x 2.5 mm<sup>2</sup> screwless terminal points; two 4 mm<sup>2</sup> screwless terminal points and two 16/25 mm<sup>2</sup> screw connection terminal points.

For snapping onto 15 mm hat rails to DIN EN 50022.



PA Polyamide

### Master data

Item number	2016270
Description 1	Phase terminal
Description 2	with plug contacts
Manufacturer	OBO
Dimension	12x2,5mm <sup>2</sup>
Colour	Grey
Material	Polyamide
Smallest sales unit	10
Unit of quantity	Piece
Weight	4.5 kg
Weight unit	kg/100 pc.

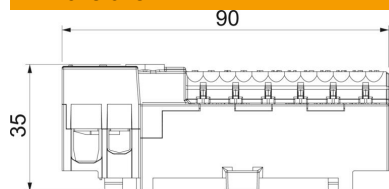
# Technical data sheet

Phase terminal, with screwless contacts, 12 terminals

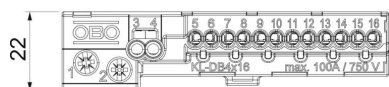
Item number: 2016270



## Dimensions



Length	85 mm
Height	20 mm



## Technical data

Closing plate required	no
No. of terminals	12
Explosion-tested version	no
Suitable for flexible conductors	no
Suitable for solid conductors	no
Suitable for multi-wire conductors	no
Mounting type	Hat rail 15 mm
Nominal cross-section, max.	16 mm <sup>2</sup>
Nominal cross-section, min.	10 mm <sup>2</sup>
Pole number	12