

Technical data sheet

Mounting plate for the installation of data sockets in
GESRM2, 2 x type B
Item number: 7407622



Mounting plate to accept two connection modules for data connection modules of the following types BTR: E-DAT; Dätwyler: MS and MS-N; Kerpen: VarioKeystone.

Dimensions of a mounting opening in mm: 19.35/21.55 x 14.85.

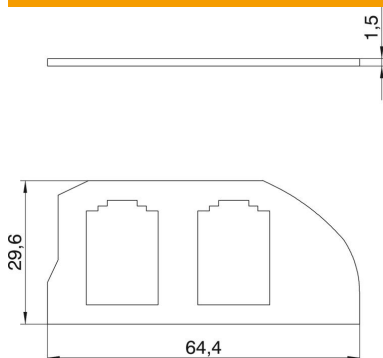


A2 Stainless steel

Master data

Item number	7407622
Type	MPRM2 2B
Description 1	Mounting plate
Description 2	with 2x hole pattern Type B
Manufacturer	OBO
Dimension	19,35x14,85
Material	Stainless steel
Smallest sales unit	1
Unit of quantity	Piece
Weight	1.3 kg
Weight unit	kg/100 pc.

Dimensions



Length	64.4 mm
Width	29.6 mm

Technical data sheet

Mounting plate for the installation of data sockets in
GESRM2, 2 x type B
Item number: 7407622



Technical data

Number of installable devices	2
Version for	Support shape
Fastening type	Lockable
Labelling panel	no
Floor covering protection frame	no
Floor plate	no
Lowerable to be flush-floor	no
Seal installation option	no
Installation opening for on-floor tank	no
Decouplable	no
Suitable for raised floor installation	yes
Suitable for screed-flush closed underfloor ducts	yes
Suitable for screed-covered underfloor ducts	yes
Suitable for cavity floor installation	yes
Suitable for wet care	yes
Suitable for underfloor ducts	yes
With floor covering recess	no
Heavy-duty version	no
Depth	1.5 mm
Strain relief option	yes