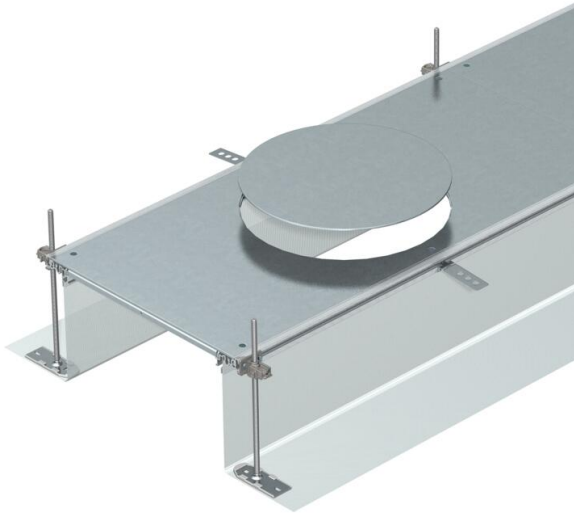


Technical data sheet

Trunking unit for GESR9, height 40–240 mm

Item number: 7424260



Ready-to-mount trunking unit with three or six device installation lids for cable laying and the installation of installation units of nominal size R9, consisting of two side profiles with attached flexible metal mesh side wall, floor covering guide profiles and trunking lid with blank mounting opening. The scope of supply contains six height-adjustable wall fixing brackets, six screed anchors and three height-adjustable cover joint supports for nominal trunking width 400 and six cover joint supports for nominal trunking widths 500 and 600. Trunking lid screwed down when delivered.

With three (for nominal trunking width 400, L = 800 mm) or six device installation lids (for nominal trunking widths 500 and 600, L = 400 mm) each with one installation opening for a round installation unit of nominal size R9.



St Steel

FS Strip galvanized

Master data

| | |
|---------------------|--------------------------|
| Item number | 7424260 |
| Type | OKA-G40040240DR9 |
| Description 1 | Flushfloor trunking unit |
| Description 2 | for service unit GESR9 |
| Manufacturer | OBO |
| Dimension | 2400x400x240 |
| Material | Steel |
| Surface | Strip galvanized |
| Surface standard | DIN EN 10346 |
| Smallest sales unit | 2.4 |
| Unit of quantity | Metre |
| Weight | 1433.75 kg |
| Weight unit | kg/100 m |

Technical data sheet

Trunking unit for GESR9, height 40–240 mm

Item number: 7424260



Dimensions



| | |
|--------|----------|
| Length | 2,400 mm |
| Width | 400 mm |

Technical data

| | |
|--|--------------------|
| Mounting opening cover | yes |
| Covers | 3 |
| Number of planned flush-mount units | 3 |
| Mounting system fastening type | Floor |
| Floor plate | yes |
| Cover fastening, locking | no |
| Seal installation option | yes |
| Installation opening for on-floor tank | no |
| Decouplable | yes |
| Suitable for expansion joint | no |
| Mesh wall | yes |
| Trunking height, max. | 240 mm |
| Duct height, min. | 40 mm |
| Cover material thickness | 4 |
| Minimum screed height | 40 |
| With connection opening | yes |
| With equipotential bonding | no |
| With separating retainer | no |
| With overhang | yes |
| Mounting opening | For service outlet |
| Mounting opening | Round |
| Height-adjustment range, max. | 240 mm |
| Height-adjustment range, min. | 40 mm |
| Removable cover | yes |