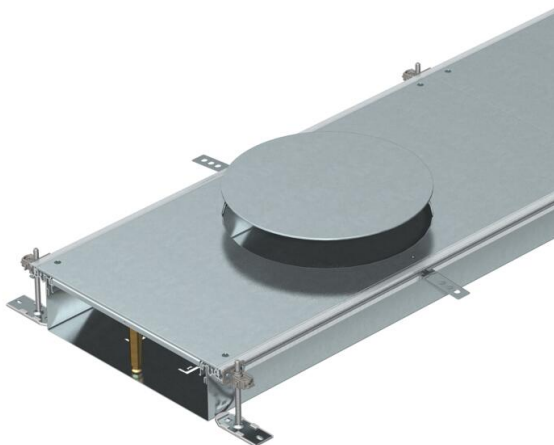


# Technical data sheet

## Trunking unit for GESR9, height 100–150 mm

Item number: 7424802



Ready-to-mount trunking unit with three or six device installation lids for cable laying and the installation of flush-mount units of nominal size R9, consisting of the trunking base (floor trough with side and floor covering contact profiles) and trunking lid with blank covered mounting opening. Floor trough with holding straps for self-contacting mounting of separating retainers. The scope of delivery contains 6 height-adjustable fixing brackets, 6 screed anchors and height-adjustable lid butt supports: 3x for nominal trunking width 400 and 6x for nominal trunking widths 500 and 600. Trunking lid screwed down when delivered.

With three (for nominal trunking width 400, L = 800 mm) or six device installation covers (for nominal trunking widths 500 and 600, L = 400 mm) each with one installation opening for a square installation unit of nominal size 9 or 9/55.



**St** Steel

**FS** Strip galvanized

### Master data

Item number	7424802
Description 1	Flushfloor trunking unit
Description 2	for service unit GESR9
Manufacturer	OBO
Dimension	2400x500x100
Material	Steel
Surface	Strip galvanized
Surface standard	DIN EN 10346
Smallest sales unit	2.4
Unit of quantity	Metre
Weight	2192.1 kg
Weight unit	kg/100 m

### Dimensions



Length	2,400 mm
Width	500 mm

# Technical data sheet

Trunking unit for GESR9, height 100–150 mm

Item number: 7424802



## Technical data

Mounting opening cover	yes
Covers	6
Number of insertable partitions	2
Number of planned flush-mount units	6
Number of compartments	3 St.
Mounting system fastening type	Floor
Floor plate	yes
Cover fastening, locking	no
Seal installation option	yes
Installation opening for on-floor tank	no
Decouplable	no
Suitable for expansion joint	no
Mesh wall	no
Trunking height, max.	150 mm
Duct height, min.	100 mm
Cover material thickness	4
Minimum screed height	100
With connection opening	yes
With equipotential bonding	no
With separating retainer	no
With overhang	yes
Mounting opening	For service outlet
Mounting opening	Round
Height-adjustment range, max.	150 mm
Height-adjustment range, min.	100 mm
Removable cover	yes