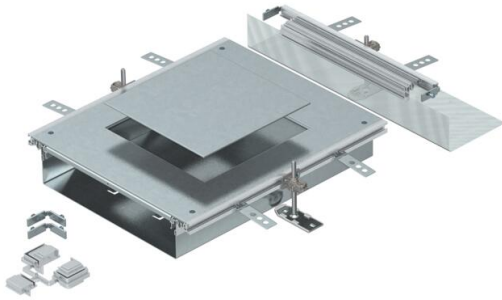


# Technical data sheet

Extension unit for GES9, height 40–70 mm

Item number: 7424884



Ready-to-mount trunking extension unit with a device installation lid for the installation of a flush-mount unit of nominal size 9, consisting of the trunking base (floor trough with side and floor covering contact profiles), trunking lid with blank mounting opening and a flushfloor end cover. The scope of delivery contains 3 height-adjustable fixing brackets, 3 screed anchors, 1 lid butt support and 1 construction set for 90° angle.

Size of the mounting unit suitable for the installation of a square installation unit of nominal size 9/55.



**St** Steel

**FS** Strip galvanized

## Master data

|                     |                  |
|---------------------|------------------|
| Item number         | 7424884          |
| Description 1       | Extension unit   |
| Description 2       | for OKA-W        |
| Manufacturer        | OBO              |
| Material            | Steel            |
| Surface             | Strip galvanized |
| Surface standard    | DIN EN 10346     |
| Smallest sales unit | 1                |
| Unit of quantity    | Piece            |
| Weight              | 868 kg           |
| Weight unit         | kg/100 pc.       |

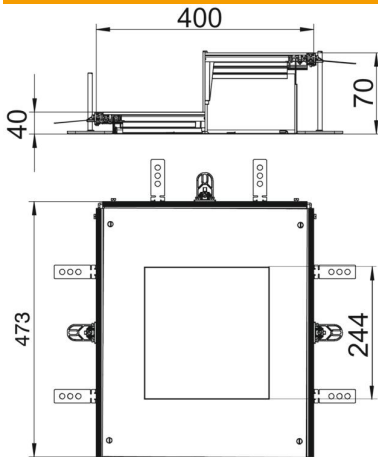
# Technical data sheet

Extension unit for GES9, height 40–70 mm

Item number: 7424884



## Dimensions



|             |        |
|-------------|--------|
| Length      | 473 mm |
| Width       | 400 mm |
| Dimension a | 244 mm |
| Dimension A | 400 mm |
| Dimension h | 40 mm  |

## Technical data

|   |                    |
|---|--------------------|
| Mounting opening cover                            | yes                |
| Covers  | 1                  |
| Number of mounting openings                       | 1                  |
| Cover fastening, locking                          | no                 |
| Seal installation option                          | yes                |
| Installation opening for on-floor tank            | no                 |
| Installation opening for flush-mount unit         | Square             |
| Decouplable                                       | no                 |
| Suitable for expansion joint                      | no                 |
| Suitable for screed-flush closed underfloor ducts | no                 |
| Suitable for flushfloor, open underfloor trunking | yes                |
| Suitable for screed-covered underfloor ducts      | no                 |
| Trunking height, max.                             | 70 mm              |
| Duct height, min.                                 | 40 mm              |
| Cover material thickness                          | 4                  |
| Minimum screed height                             | 40                 |
| With connection opening                           | yes                |
| With equipotential bonding                        | no                 |
| With separating retainer                          | no                 |
| With overhang                                     | yes                |
| Mounting opening                                  | For service outlet |
| Nominal size for device installation units        | 9                  |
| Height-adjustment range, max.                     | 70 mm              |
| Height-adjustment range, min.                     | 40 mm              |
| Removable cover                                   | yes                |