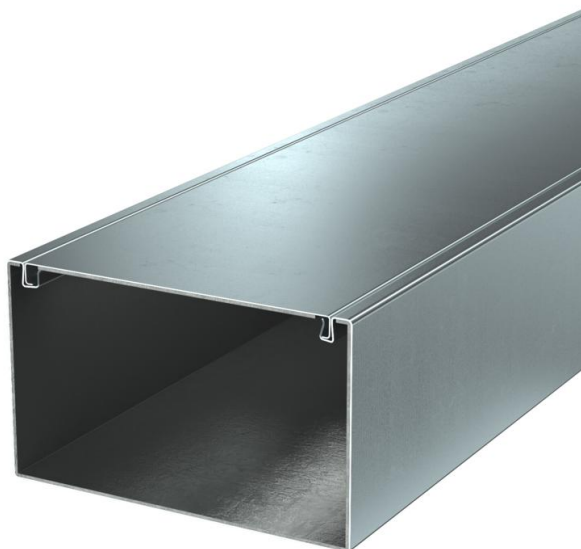


Technical data sheet

Installation duct with PYROLINE® Rapid PLM fire protection mesh, duct height 120 mm, FS

Item number: 7218012



Metal installation duct with intumescent fire protection mesh for fireproof routing of cables. Classified as an installation duct EI30, EI60 and EI90 according to EN 13501-2, tested according to EN 1366-5. The duct prevents the fire spread for the classified period of time, offering protection against the effects of a cable fire.

Suitable for direct wall and ceiling mounting, mounting below system floors and on support systems. Tool-free joint mounting with PLM SI joint connector. Only approved pre-terminated fittings may be used. The cover is snapped on without tools, allowing rapid inspection and retroassignment. Offset cover mounting for continuous equipotential bonding of the entire duct section.



St Steel

FS Strip galvanized

Master data

Item number	7218012
Type	PLM D 1220 FS
Description 1	Installation duct metal
Description 2	with fire protection mesh
Manufacturer	OBO
Dimension	120x200x2000
Material	Steel
Surface	Strip galvanized
Surface standard	DIN EN 10346
Smallest sales unit	2
Unit of quantity	Metre
Weight	642.5 kg
Weight unit	kg/100 m

Dimensions

Length	2,000 mm
Width	200 mm
Height	120 mm
Dimension B	200 mm
Dimension H	120 mm
Dimension i	162 mm

Technical data sheet

Installation duct with PYROLINE® Rapid PLM fire protection mesh, duct height 120 mm, FS

Item number: 7218012



Technical data

Number of flammable sides	4
Cover fastening	Miscellaneous
Classification EI – installation duct	90
With perforation	yes
Usable cross-section	18500 mm ²
Partitions possible	yes
Jacketing	Steel
Internal height	114 mm
Internal width	194 mm
maximum specific impedance Z1	2 mΩ/m