

Technical data sheet

Beam clamp SSP 20-40, VA M6

Item number: 1486244



This type of beam clamp is pushed onto the support and fixed to the girder or flat iron using a pressure trough and bolt (M8). The hexagonal bolt has a WAF of 10 mm. In the clip element, two additional M6 threads are also incorporated, to fix threaded rods, for example.

CE

A4 Stainless steel

2B Bright, treated

Master data

Item number	1486244
Type	SSP 20-40 M6 A4
Description 1	Beam clamp
Description 2	heavyweight design
Manufacturer	OBO
Dimension	20-40mm
Material	Stainless steel
Surface	Bright, treated
Surface standard	
Smallest sales unit	25
Unit of quantity	Piece
Weight	27.7 kg
Weight unit	kg/100 pc.

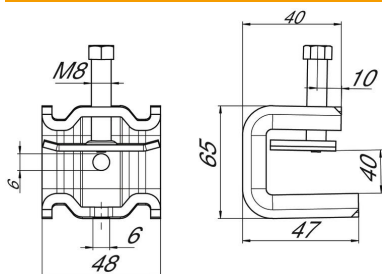
Technical data sheet

Beam clamp SSP 20-40, VA M6

Item number: 1486244



Dimensions



Dimension B	48 mm
Dimension H	65 mm
Dimension L	47 mm

Technical data

Connection type/component	Thread
Fastening type	Clamp
Breaking load F1	1.4 kN
Breaking load F2	1.3 kN
Flange thickness F max.	40 mm
Flange thickness F min.	20 mm
Suitable for metric threaded rod	6
Thread	M8
Thread metric	8
Hinge, adjustable	no
Hinged	no